

*The Executive Series*



Now Building in

*Eagle Crest Estates*

Phase 2



**JUAN & NETTY ZUNIGA**  
*Certified Luxury Home Specialists*

509-302-7837- Juan  
509-619-6336- Netty  
[nzuniga.johnlscott.com](http://nzuniga.johnlscott.com)



**EXCEPTIONAL**  
**HOMES** by **John L. Scott**

Download the NEW John L. Scott  
GPS Home Search App 3.0

To see all listings, all companies\*

[JLSApp.com/nzuniga](http://JLSApp.com/nzuniga)



This office is independently owned and operated



# The Executive Series Features

- 10' Ceilings on Main Floor
- Crawlspace Foundation
- Lifetime IKO composition roofing in several colors with Ridgevent
- Full Stucco Exteriors w/ Trim Details at Front Elevations
- Fully insulated home to meet or exceed Energy Code standards
- Insulated garage walls
- R49 Blown in attic insulation
- High performance heat pump systems
- Digital Honeywell thermostats
- Oversized garages finished with sealed concrete, sheet rock and paint
- Man door with concrete pad
- Keypad for garage opener (one only at double bay)
- Vinyl windows with screens in choice of colors
- \$1000 budget for entry door
- Optional grids at front windows
- Direct vent gas fireplace with stone surround
- Cabinet built ins at fireplace
- Fireplace built to accommodate a large flat screen TV with a location for components designed into it
- On demand gas water heater (where gas is available )
- Under counter mount double bowl stainless sink at kitchen
- Kohler contemporary sinks at master
- Several standard faucet fixtures to choose from in Bronze, Brushed Nickel or Chrome
- Elongated Toilets
- Two Hose Bibs
- 400 amp service w/ 2 panels
- One can light for every 100 SF of home
- Medial panel
- Pendant lighting at island
- Ceiling fan at Great Room and Master Bedroom
- Lighting budget of 1/2% of house price
- Undercabinet lighting at kitchen uppers
- Drywall- choice of nose or square corners
- Wine bar
- Two Toned Interior Paint Package at Walls/Ceilings
- A 3rd Accent Color at up to 3 locations included
- White Painted Millwork Package
- Cabinets in several finishes and door styles to choose from
- 42" uppers at kitchen upper cabinets
- Crown Molding at Kitchen Upper Cabinets
- Knobs with 5\$ per knob budget included
- Kitchen & bathrooms with quartz in several choices
- Laminate at Utility Room (if applicable)
- Full tile back splash at kitchen
- 4" tile back splash at all other counters
- Custom tiled in shower with accents (see plan)
- Gutters at front entry
- Luxury vinyl plank (LVP) flooring at entry, kitchen, dining, Great room and dens (where applicable)
- Tile at all bath and laundry floors
- Premium Carpet at all other areas with 8lb pad
- 3 1/4 and 5 1/4 case and base molding in choice of styles
- Architrave molding headers above doors
- Full wrap window casing at all windows
- Choice of hardware
- Wood painting shelving, matching the closet wall color
- Generous budget for appliances (\$4,000) to include Micro/oven, cooktop, hood and dishwasher
- Front yard landscaping
- Concrete curbing
- Rock, shrubs, trees as required and underground sprinklers included

Prices reflect base prices and are subject to change without notice. Lot premiums and options may add to the total of your new home. The plan drawing and rendering represent an artist's conception and are not intended to be an exact representation and is not intended to show specific detailing. Plans remain subject to change without notice. Drawings are not to scale. All measurements are approximate.



**JUAN & NETTY ZUNIGA**  
*Certified Luxury Home Specialists*

509-302-7837- Juan  
509-619-6336- Netty  
nzuniga.johnlscott.com



**EXCEPTIONAL**  
HOMES by John L. Scott



Download the NEW John L. Scott  
GPS Home Search App 3.0

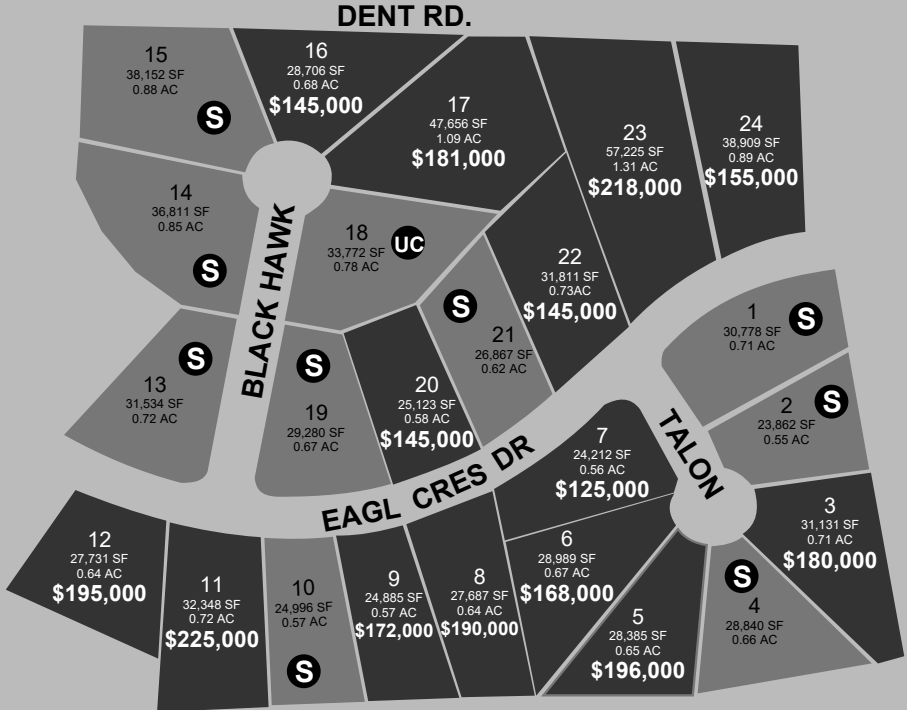
To see all listings, all companies\*

JLSApp.com/nzuniga

This office is independently owned and operated



# Eagle Crest Estates Phase 2

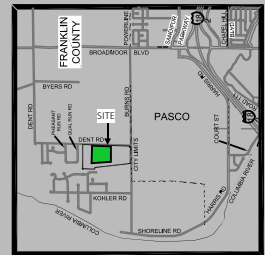


- AVAILABLE LOTS
- SOLD/UNDER CONTRACT LOTS



0 50 100 200

Nov, 2019



**JUAN & NETTY ZUNIGA**  
Certified Luxury Home Specialists

509-302-7837- Juan  
509-619-6336- Netty  
nzuniga.johnlscott.com

**EXCEPTIONAL**  
HOMES by John L. Scott



Download the NEW John L. Scott  
GPS Home Search App 3.0

To see all listings, all companies\*  
JLSApp.com/nzuniga

This office is independently owned and operated



## The Executive Series Floor Plans & Prices

Floor Plan	SqFt	Garage	Garage SqFt	Pricing
Kimberly Ann (w/Bon)	2910	4	1052	\$429,300 est
Kathryn Ann (w/Bon)	3080	6	1340	\$457,500 est
Claire Ann	2501	6	1317	\$433,900 est
Claire Ann (w/Bon)	3325	6	1317	\$488,300 est
Leah Lynn ( no RV)	3941	3	884	\$632,200 est
Leah Lynn (with RV)	3941	4+	1684	\$686,200 est
Camarra Quinn	2865	4	1163	\$472,200 est
Chauntel Leigh	3193	3	1116	\$504,200 est
Sandra Faye	4380	3	958	\$665,200 est

Notes:

**Does NOT include lot cost**

Square footage is approximate.

Prices, promotions, specifications, and availability are subject to change.

Certain lots are subject to lot premiums. See sales associate for more details.

Includes front yard landscaping only.

Any topography challenges will be priced on a case by case basis.

*Includes: Man door, Keypad, Undercab lighting, 400 amp service, Master w/ Kohler sinks, On Demand Water Heater, Wine Bar, Pulls, Quartz, Master Shower upgrade*



JUAN & NETTY ZUNIGA  
Certified Luxury Home Specialists

509-302-7837- Juan  
509-619-6336- Netty  
nzuniga.johnlscott.com



This office is independently owned and operated.



## *The Claire Ann*

Starting at

*\$433,900 Est*

### *Features*

2,501 Square Feet

4 Bedrooms

2 Bathrooms

6 car garage

1,317 sf garage

Office/den/dining

Covered patio included

Gas fireplace included



JUAN & NETTY ZUNIGA  
*Certified Luxury Home Specialists*

509-302-7837- Juan  
509-619-6336- Netty  
[nzuniga.johnlscott.com](http://nzuniga.johnlscott.com)

# *Luxury*



EXCEPTIONAL  
HOMES *by* John L. Scott

This office is independently owned and operated.



# The Claire Ann Floor Plan



JUAN & NETTY ZUNIGA  
*Certified Luxury Home Specialists*

509-302-7837- Juan  
509-619-6336- Netty  
nzuniga.johnlscott.com

# Luxury



EXCEPTIONAL  
HOMES<sup>SM</sup> John L. Scott

This office is independently owned and operated.



## *The Claire Ann w/ Bonus*

Starting at  
**\$488,300 Est**

### *Features*

3,325 Square Feet  
4 Bedrooms  
2-2.5 Bathrooms  
6 car garage  
1,317 sf garage  
Office/den/dining  
Covered patio included  
Gas fireplace included  
Bonus room



**JUAN & NETTY ZUNIGA**  
*Certified Luxury Home Specialists*

509-302-7837- Juan  
509-619-6336- Netty  
[nzuniga.johnlscott.com](http://nzuniga.johnlscott.com)

# *Luxury*

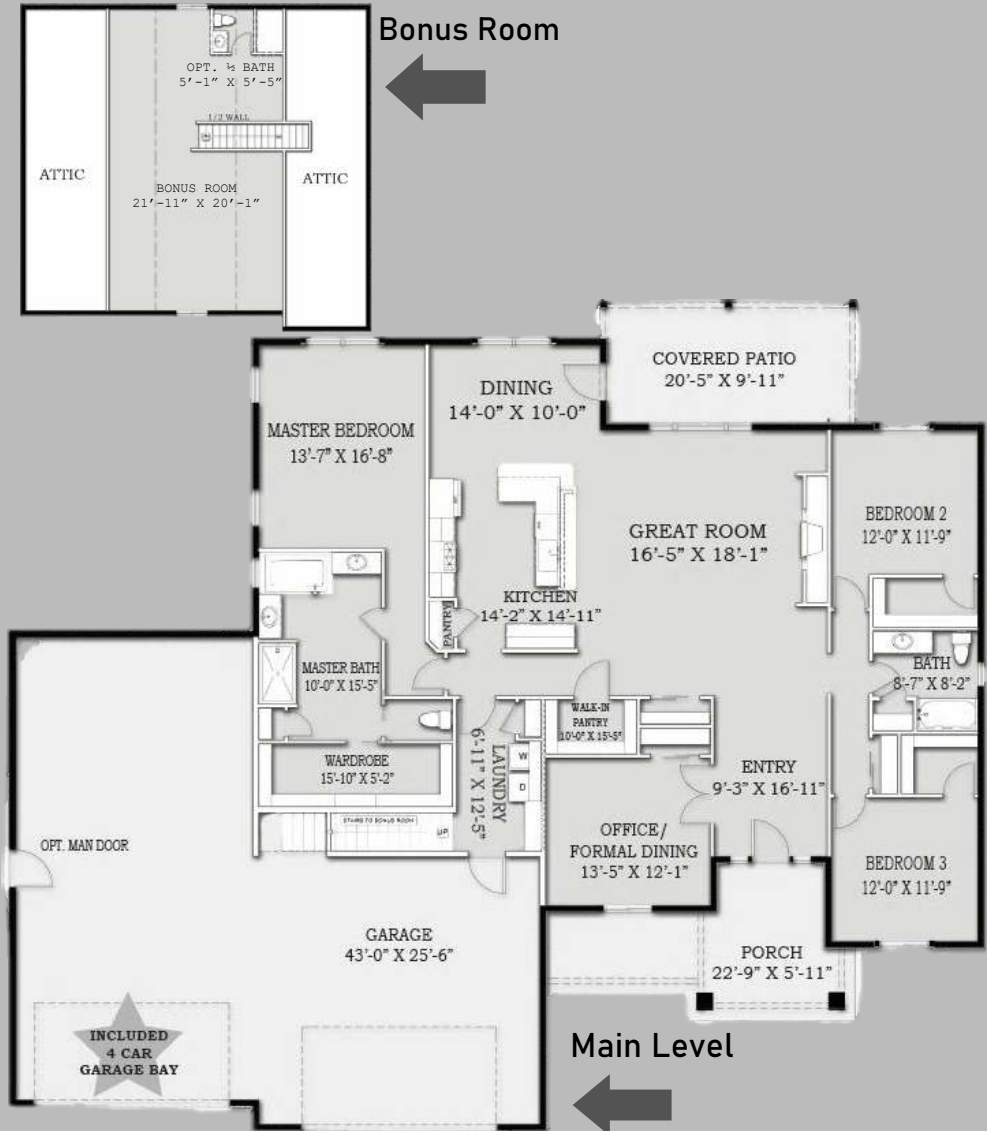


**EXCEPTIONAL  
HOMES** by **John L. Scott**

This office is independently owned and operated.



## The Claire Ann w/ Bonus Floor Plan



**JUAN & NETTY ZUNIGA**  
*Certified Luxury Home Specialists*

509-302-7837 - Juan  
509-619-6336 - Netty  
nzuniga.johnlscott.com

*Luxury*



**EXCEPTIONAL**  
HOMES by **John L. Scott**

This office is independently owned and operated.





# *The Kimberly Anne w/ Bonus (4 Car)*

Starting at  
*\$429,300 Est*

## *Features*

2,910 Square Feet  
4 Bedrooms  
2 Bathrooms  
4 car garage  
1,052 sf garage  
Gas fireplace included  
Office/den/dining



JUAN & NETTY ZUNIGA  
*Certified Luxury Home Specialists*

509-302-7837- Juan  
509-619-6336- Netty  
[nzuniga.johnlscott.com](http://nzuniga.johnlscott.com)

# *Luxury*



EXCEPTIONAL  
HOMES *by* John L. Scott

This office is independently owned and operated.



## *The Kathryn Ann w/ Bonus (6 Car)*

Starting at

*\$457,500 Est*

### *Features*

3,080 Square Feet

4 Bedrooms

2-2.5 Bathrooms

6 car garage

1,340 sf garage

Office/den/dining

Covered patio included



**JUAN & NETTY ZUNIGA**  
*Certified Luxury Home Specialists*

509-302-7837- Juan  
509-619-6336- Netty  
[nzuniga.johnlscott.com](mailto:nzuniga.johnlscott.com)

*Luxury*

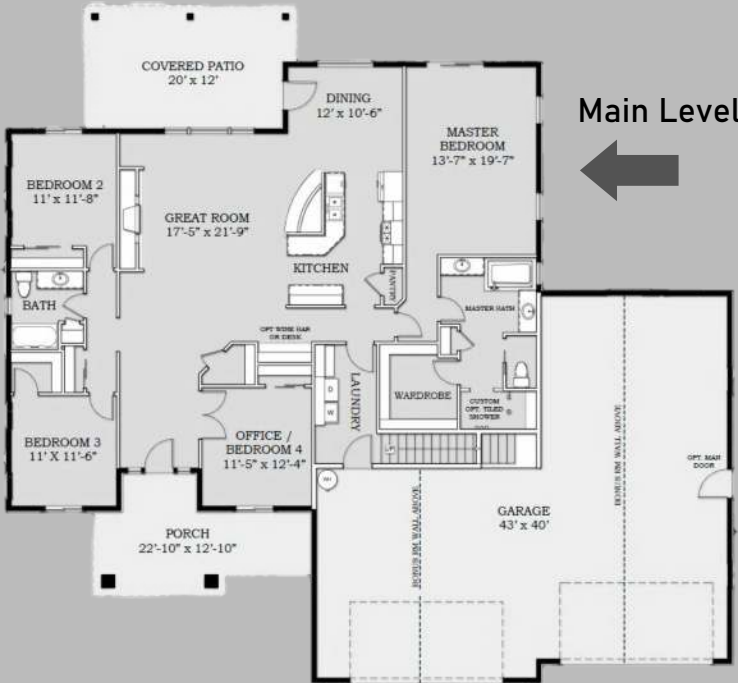


**EXCEPTIONAL  
HOMES** by **John L. Scott**

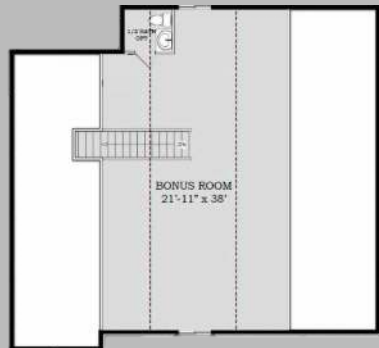
This office is independently owned and operated.



# The Kathryn Ann w/ Bonus (6 Car) Floor Plan



## Bonus Room



**JUAN & NETTY ZUNIGA**  
*Certified Luxury Home Specialists*

509-302-7837- Juan  
509-619-6336- Netty  
nzuniga.johnlscott.com

*Luxury*

**EXCEPTIONAL  
HOMES** by John L. Scott

This office is independently owned and operated.



## *The Leah Lynn*



### *Features*

3,941 Square Feet  
4 Bedrooms  
5 Bathrooms  
2 master suites  
4+ garage (1,684 sf)  
Large his & hers closets in master  
Guess room & bonus room  
RV/ Boat Garage



Starting at

*\$686,200 Est*



JUAN & NETTY ZUNIGA  
*Certified Luxury Home Specialists*

509-302-7837- Juan  
509-619-6336- Netty  
nzuniga.johnlscott.com

*Luxury*



EXCEPTIONAL  
HOMES by John L. Scott

This office is independently owned and operated.



# The Leah Lynn Floor Plan



**JUAN & NETTY ZUNIGA**  
*Certified Luxury Home Specialists*

509-302-7837- Juan  
 509-619-6336- Netty  
[nzuniga.johnlscott.com](http://nzuniga.johnlscott.com)

*Luxury*



**EXCEPTIONAL HOMES**  
*by John L. Scott*

This office is independently owned and operated.



## *The Chauntel Leigh*



### *Features*

3,193 Square  
Feet 3 Bedrooms  
2 ½ Bathrooms  
3 Car Garage  
1,116 sf garage



Starting at  
*\$504,200 Est*



**JUAN & NETTY ZUNIGA**  
*Certified Luxury Home Specialists*

509-302-7837- Juan  
509-619-6336- Netty  
[nzuniga.johnlscott.com](http://nzuniga.johnlscott.com)

*Luxury*  **EXCEPTIONAL  
HOMES by John L. Scott**

This office is independently owned and operated



# The Chauntel Leigh Floor Plan



**JUAN & NETTY ZUNIGA**  
*Certified Luxury Home Specialists*

509-302-7837- Juan  
509-619-6336- Netty  
[nzuniga.johnlscott.com](http://nzuniga.johnlscott.com)

*Luxury*



**EXCEPTIONAL**  
**HOMES** by **John L. Scott**

This office is independently owned and operated





## *The Camarra Quinn*



### *Features*

2,865 Square Feet  
3 Bedrooms  
2 ½ Bathrooms  
4 Car Garage  
1,163 Sq Ft Garage

Starting at  
*\$472,200 Est*



JUAN & NETTY ZUNIGA  
*Certified Luxury Home Specialists*

509-302-7837- Juan  
509-619-6336- Netty  
[nzuniga.johnlscott.com](http://nzuniga.johnlscott.com)

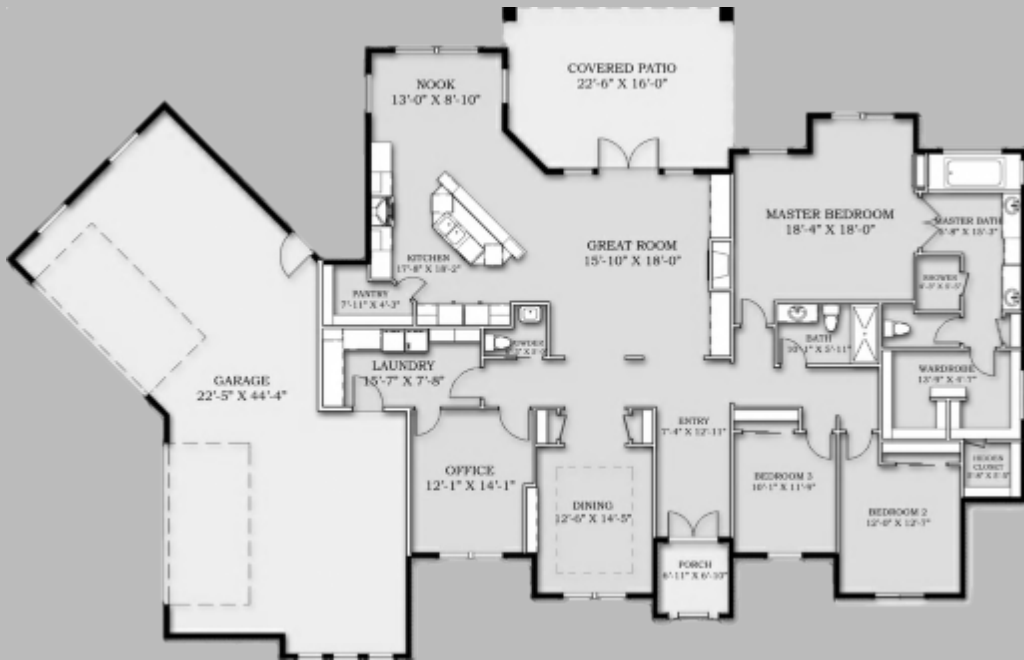
*Luxury*  **EXCEPTIONAL  
HOMES** *by John L. Scott*

This office is independently owned and operated





# The Camarra Quinn Floor Plan



**JUAN & NETTY ZUNIGA**  
*Certified Luxury Home Specialists*

509-302-7837- Juan  
509-619-6336- Netty  
[nzuniga.johnlscott.com](http://nzuniga.johnlscott.com)

# Luxury



**EXCEPTIONAL**  
**HOMES** by **John L. Scott**

This office is independently owned and operated.



## *The Sandra Faye*



### *Features*

4,380 Square Feet  
4 Bedrooms  
3 Baths  
Media Room/game room  
3 Car Garage  
958 Sq Ft Garage  
Office/workout room  
Butlers pantry



Starting at

*\$665,200 Est*



JUAN & NETTY ZUNIGA  
*Certified Luxury Home Specialists*

509-302-7837- Juan  
509-619-6336- Netty  
[nzuniga.johnlscott.com](http://nzuniga.johnlscott.com)

*Luxury*



EXCEPTIONAL  
HOMES by John L. Scott

This office is independently owned and operated





Juan Zuniga | [jjuniga@johnlscott.com](mailto:jjuniga@johnlscott.com) | 509.302.7837

Netty Zuniga | [nzuniga@johnlscott.com](mailto:nzuniga@johnlscott.com) | 509.619.6336

*Residential Construction Certified*

**John L. Scott®**  
REAL ESTATE



This office is independently owned and operated. REALTOR® OPPORTUNITY